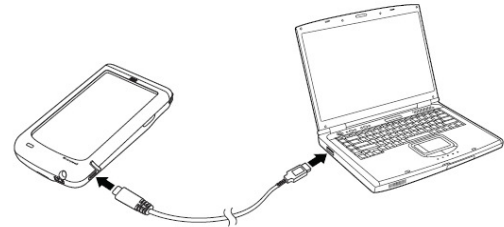


### Firmware upgrade Captuvo SL22

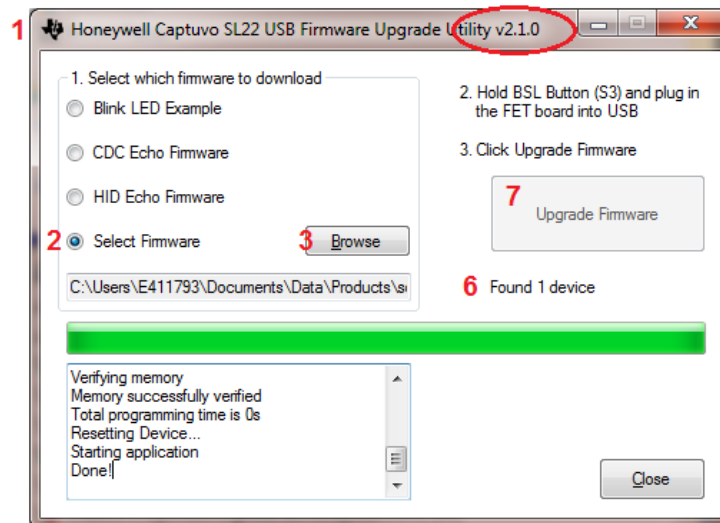
The Honeywell Captuvo SL22 Enterprise Sled For Apple® has it's own bootloader and firmware, which can be upgraded through the USB BSL port. Upgrading requires a product specific **Firmware Upgrade Utility** that comes with the SDK. Previous versions of the Firmware Upgrade Utility should be removed. (see note)



Connect your Captuvo SL22 with the cable used for charging via USB BSL port to the PC's USB port

#### Upgrade the Bootloader first...

1. Run the Firmware Upgrade Utility v2.1.0. 'Captuvo\_Update.exe" from your PC and select Next
2. Check the "Select Firmware" Option
3. Click the now highlighted 'Browse' Button and locate and select the bootloader file 'Captuvo\_x.x.x\_Bootloader.txt'
4. Remove the iPod from the Captuvo SL22.
5. Connect your Captuvo SL22 with the cable used for charging via USB BSL port to the PC's USB port.
6. Note the Utility mentions it found a device (under the Upgrade Firmware button)
7. Click the now highlighted Upgrade Firmware Button

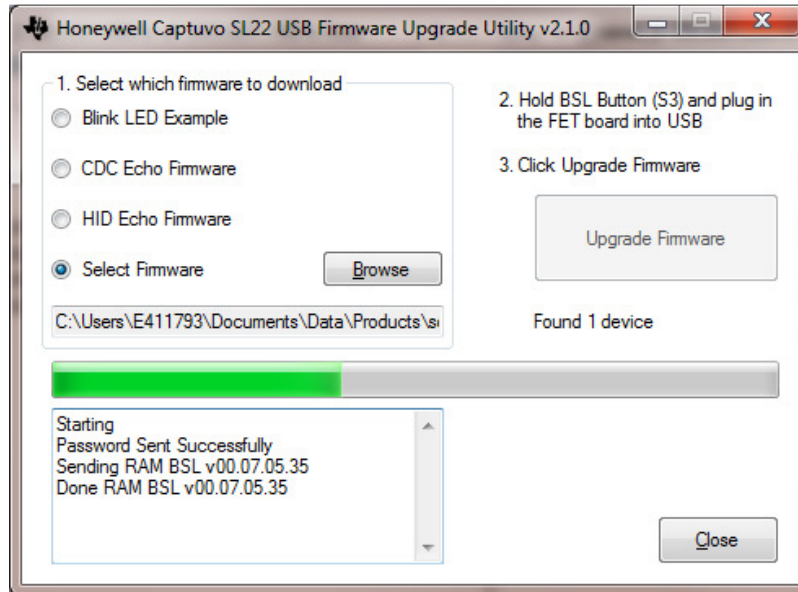


This is an entry from the Honeywell Scanning & Mobility Knowledge base. As part of our ongoing effort to improve and enhance the quality of the solutions, we ask you to inform us if you feel that we can improve on the content of this solution.

Support Portal: [www.hsmsupportportal.com](http://www.hsmsupportportal.com) - Web form: [www.hsmcontactsupport.com](http://www.hsmcontactsupport.com)  
 Knowledge Base: [www.hsmknowledgebase.com](http://www.hsmknowledgebase.com) - Phone: [www.honeywellaidc.com/locations](http://www.honeywellaidc.com/locations)

## Next upgrade the actual Firmware:

1. Remove and re-attach your Captuvo SL22 from the PC.
2. Run the Firmware Upgrade Utility 'Captuvo\_Update.exe" from your PC and select Next
3. Check the "Select Firmware" Option
4. Click the now highlighted Browse Button and locate and select the bootloader file 'Captuvo\_x.x.x\_Firmware.txt'
5. Note if the Utility mentions it found a device (under the Upgrade Firmware button)



## IMPORTANT NOTE:

Prevent using versions of the download tool, older than 2.1.0 as they will not work and may brick the device.

If the update halts and does not progress past 'Sending <fw filename.txt', disconnect and reconnect the sled to the PC and restart the firmware download process.